

Connecting a Laptop to the Projector

1. Turn your laptop on and connect the video/audio cable to the computer and the wall panel.

Be sure to connect the audio cable to the “headphone out” jack on the computer and not the “microphone in” jack.



video/audio cable

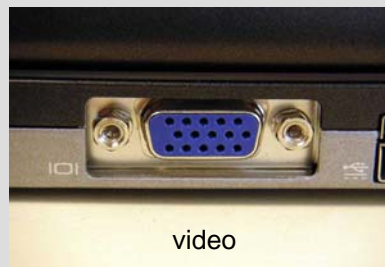


wall panel

computer ports



audio



video

2. Lower the projector screen using the up/down switch on the wall. The switch panel on the wall will be one of the two types pictured.



3. Turn on the projector using the **Proj On** button on the wall panel.

Press the **Computer** button.

Check that **Picture Mute** is not selected.



4. Some laptops will automatically detect the projector and move your laptop image to the projector screen. However, if this does not happen:

A) Press the Function Key (Fn key located in the lower left of your keyboard).



Function Key

B) While holding the Fn key down, Press the F# key that contains an image of a computer/monitor.



If your laptop does not have a F# key with a picture like the one above, look for a F# key with CRT/LCD listed below the number.



Note:

Different brands of laptops have a different F# key designated for this purpose, so the numbers indicated on the examples may not correspond with your laptop.

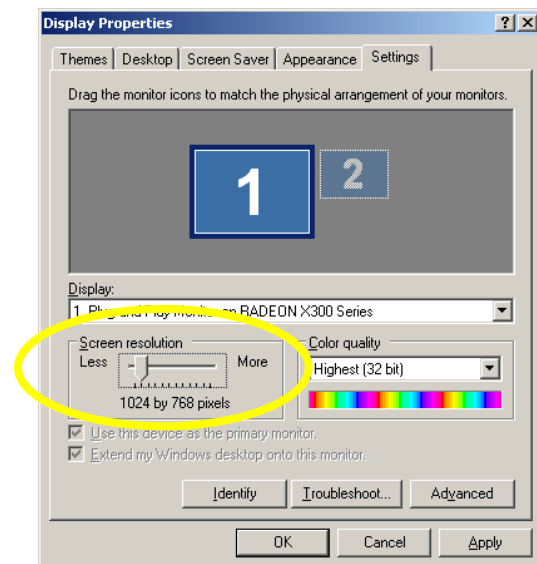
5. The projectors are set to operate at a screen resolution of 1024 x 768 pixels. For best results, you should set the resolution of your laptop display to match.

To do this, right-click the desktop and select **Properties**.

In the **Display Settings** dialog box, click the **Settings** tab.

Drag the Screen resolution slider left or right until **1024 by 768 pixels** is displayed.

Click **OK**.



Optional Features

Laptop Remote Control

Plug the remote control receiver into a USB port on the laptop.

See the next page for instructions on using the remote control with your PowerPoint presentations.



Receiver



Remote control

Network Connection

To connect to the network, you can choose to connect through the network cable or via the wireless network.

To connect to the wired network, attach the network cable from the data jack in the wall to the network jack on the computer.

You do not have to connect to the network to play DVDs or PowerPoint presentations stored on the laptop.



Computer



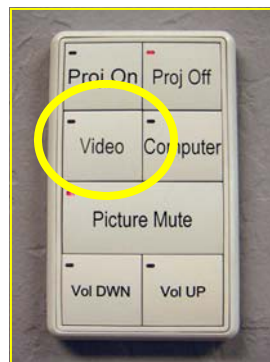
Wall

Connecting a VCR

Attach the VCR cables to their corresponding color-coded jacks on both the VCR and the wall.

Turn on the VCR and the projector.

Push the Video button on the wall panel.



Using the Remote Control

Basic functions of the projector can be controlled via the wall switches. Additional functions are available via the remote control.

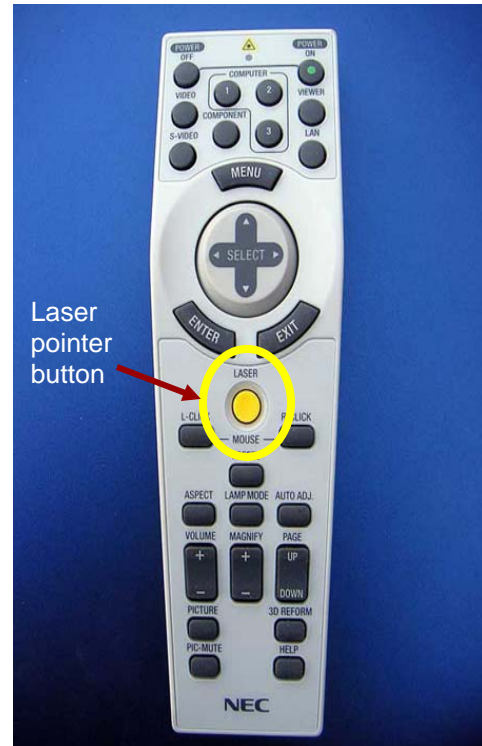
The remote includes a laser pointer that can be used for presentations.

Press and hold the yellow **LASER** button to turn on the laser pointer.



CAUTION:

- Do not look into the laser pointer while it is on.
- Do not point the laser beam at a person.
- Do not allow children to use the laser pointer.



Use the **PAGE UP** and **DOWN** buttons to go forward and back slides in a PowerPoint presentation.

